



# Milestone Solution Design

## Training class agenda

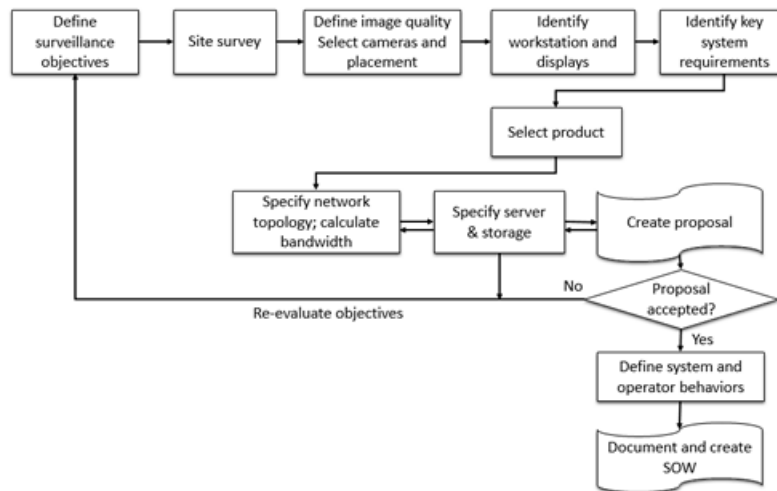


**Note:** Each attendee must bring a laptop with wireless connectivity, a modern browser capable of accessing the internet and the ability to access a spreadsheet software program.

### Course description

The Milestone Solution Design instructor-led training class provides attendees with the knowledge and skills needed to design Milestone XProtect® Advanced (XProtect® Expert and XProtect® Corporate) surveillance systems that effectively support customers' surveillance objectives and optimize return on investment.

Based on the Milestone Solution Design Model, the class presents relevant information and hands-on exercises to lead attendees through surveillance system design, focusing on the Milestone-specific components of the process.



Attending this class helps prepare attendees to take the Milestone Certified Design Engineer (MCDE) online assessment.

**Milestone Systems Inc.**

8905 SW Nimbus Avenue, Suite 400 • Beaverton, OR 97008, USA • Tel: +1 503 350 1100 • Fax: +1 503 350 1199

The course duration is two full working days, 9 am to 5 pm, with a total seat time of 12 hours. Coffee and other refreshments are provided throughout the day and lunch is provided.

## Course format

This two-day training class consists of a series of hands-on exercises that helps attendees successfully design effective solutions for real-life scenarios.

Step-by-step instructions guide attendees as they work to gather information, define surveillance objectives, specify hardware and Milestone products and features, as well as discussion topics that address common solutions.

Attendees leave with annotated notes to help transfer their knowledge to the field.

## Target audience

The target audience includes security and surveillance professionals who have the direct responsibility to design complex Milestone surveillance systems, as well as technical sales professionals who want to better understand and position the Milestone Advanced platform to their customers.

## Prerequisites

We **strongly recommend** attendees complete the following Milestone eLearning courses before attending the class:

- Milestone Fundamentals of IP Surveillance Systems
- Designing small-to-medium XProtect VMS

In addition, attendees may benefit from the following free eLearning course:

- Exploring system design options with the Husky M500 Advanced

These free eLearning courses can be accessed on the [Milestone Partner Learning Portal](#).

## Technical equipment

Each attendee is required to bring a laptop with wireless connectability and a modern browser capable of accessing the internet.

## Class materials

Each attendee will receive the following materials in class:

- The Milestone Solution Design: Exercise Handbook
- The Milestone Solution Design: Performance Checklist
- Electronic copies of the class presentation, exercise handbook, performance checklist, job aids, and design-related whitepapers

### Milestone Systems Inc.

8905 SW Nimbus Avenue, Suite 400 • Beaverton, OR 97008, USA • Tel: +1 503 350 1100 • Fax: +1 503 350 1199

## Certificates and credits

When class concludes on the second day, a certificate of completion will be available to download and print in each attendee's Milestone Learning Portal profile. This certificate can be submitted to Building Industry Consulting Service International ([BICSI](#)) for up to 12 Continuing Education Credits.

## Agenda (2 days)

### Day 1:

- Solution Design Course Introduction
- Defining Surveillance Objectives
- Determining Image Quality and Selecting Camera Selection
- Identifying Roles and Design Workstations
- Determining Key System Requirements
- Choosing the Right Milestone Product

### Day 2:

- Specifying Network Topology
- Developing Proposals
- Defining System and Operator Behaviors

## Hands-on exercises

### Defining surveillance objectives

- Exercise 1: Identifying surveillance objectives
- Exercise 2: Discussing site survey best practices

### Determining image quality and selecting cameras

- Exercise 3: Determine dimensions from surveillance images
- Exercise 4: Calculating image resolution for license plate recognition
- Exercise 5: Calculating retail entrance resolution
- Exercise 6: Selecting and placing cameras

### Identifying roles and design workstations

- Exercise 7: Assigning workstations for different roles

### Determining key system requirements

- Exercise 8: Examining requirements

### Choosing the right Milestone product

- Exercise 9: Choosing XProtect VMS products

### Specifying network topology

- Exercise 10: Designing Network Topology
- Exercise 11: Using the Milestone Server Calculator

#### **Milestone Systems Inc.**

8905 SW Nimbus Avenue, Suite 400 • Beaverton, OR 97008, USA • Tel: +1 503 350 1100 • Fax: +1 503 350 1199

- Exercise 12: Using the XProtect Server Calculator—part 1
- Exercise 13: Using the XProtect Server Calculator—part 2
- Exercise 14: Using the XProtect Server Calculator—part 3

### Developing proposals

- Exercise 15: Determining Milestone licensing

### Defining system and operator behaviors

- Exercise 16: Exploring statement of work elements