



Premium-Line

Fiber Optic Rack Mounted Patch Panel



premium[®]
line

Fiber Optic Rack Mounted Patch Panel

with fully loaded adapter panel and smooth sliding tray

The fiber optic rack mounted fiber patch panel is designed for both patching and splicing and can accept a whole range of fiber adapters including our FC, ST, SC, LC, E2000 adapters. It has the function of splicing, distribution, administration, protection and storage for fiber cables. With our high quality materials and elegant design, it will be your first choice!

To effectively manage optical fiber terminations and splices, we provide a termination solution for LAN applications requiring fully enclosed and lockable rack mounted patch panel. These units are equipped with cable management reels and cable routing accessories to limit the bending radius and add strain relief control.



Fully Loaded Adapter Panel

The most convenient point is that we provide you fully loaded adapter panel, with whole range of fiber adapter types. Also changeable adapter panel design make sure it can be easily and quickly changed. Saving your time , saving your expense.

Smooth Sliding Tray

The sliding rails on the two sides of the patch panel can offer a better operating environment during fiber management.



premium[®]
line

Premium-Line Systems GmbH
www.premiumline-cabling.com



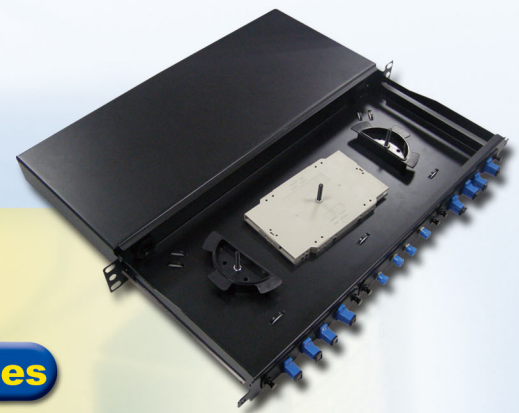
premium[®] line Fiber Optic Rack Mounted Patch Panel

with fully loaded adapter panel and smooth sliding tray



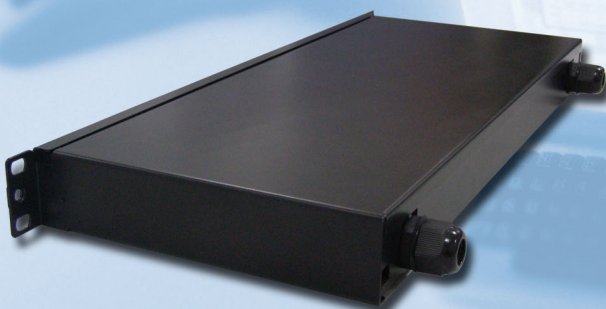
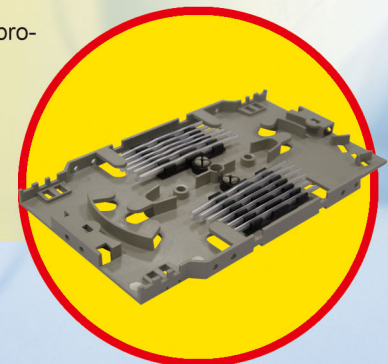
Wide-angled Frame

The frame of the patch panel could be adjusted to 155 degrees which is convenient for installing the interior optic fiber.



Easy & Simple Fiber Management Accessories

A whole series of accessories inside the patch panel, including cable splicing cassette and cable routings for better cable bending radius and cable routing management. Splicing protection tubes can provide the fragile splicing points with maximum protection.



Two Tightly Sealed Cable Entries

Two tightly sealed cable entries on the back of the patch panel can protect cables and equip them with cable management features.

**premium[®]
line**

Premium-Line Systems GmbH
www.premiumline-cabling.com